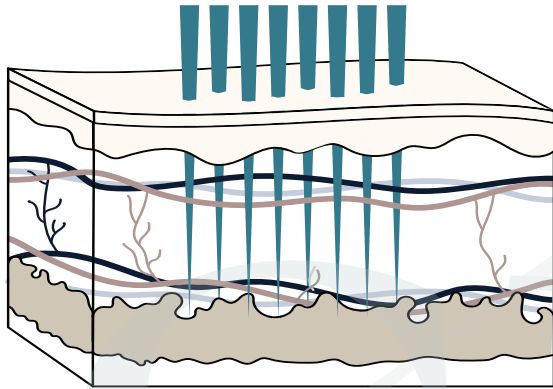


MICRONEEDLING

SKIN RESURFACING

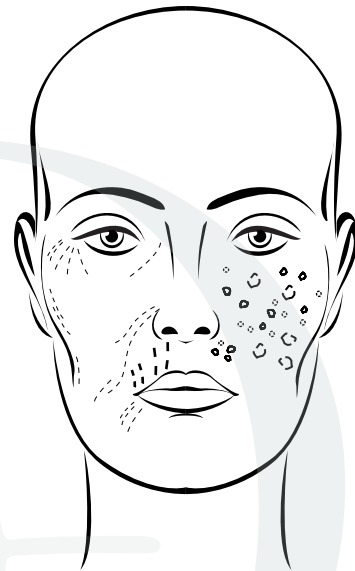
HOW IT WORKS



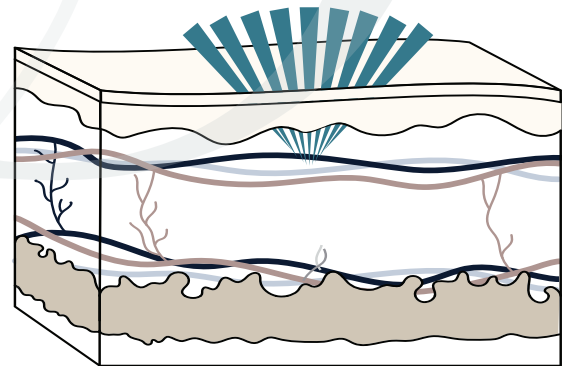
An FDA approved microneedling device will use sterile needles to bore “micro” holes into the skin. These micro injuries are controlled by depth, angle, and speed to promote neocollagenesis.

TARGETS

Acne Scars
Fine lines & texture
Health & Prevention



DONT TRUST ROLLERS



- 3 Dangers of at home microneedling rollers:
- **Rolling:** Cone like damage = not micro
 - **Sterile:** multi use needles = high infection
 - **Depth:** FDA restricted depth = no collagen

SINGLE TREATMENTS		
<i>Area(s)</i>	<i>Signature</i>	<i>Elite</i>
Face	\$350	\$490
Single Area	\$350	\$490
Face & Neck	\$475	\$600
Face, Neck, & Chest	\$600	\$750

PACKAGE OF 4		
<i>Area(s)</i>	<i>Signature</i>	<i>Elite</i>
Face	\$1,190	\$1,666
Single Area	\$1,190	\$1,666
Face & Neck	\$1,615	\$2,040
Face, Neck, & Chest	\$2,040	\$2,550

*If you require a prescriptions bleaching or retinoid cream please contact the clinic 48 hours prior to treatment.
All prices subject to change without notice & may vary depending on individual needs*

PHONE
Call or text us
at 385.273.3376

SMART *Skin*
DERMATOLOGY

LOCATION
3200 W Clubhouse Dr. #100
Lehi, UT 84043

MICRONEEDLING

SKIN RESURFACING

ABOUT TREATMENT

Microneedling is a type of skin resurfacing procedure. Most forms of skin resurfacing are achieved by introducing small channels into the skin. These channels stimulate collagen formation and skin resurfacing. This is very similar to the process of aerating your lawn. With microneedling, it is actually a group of very small needles that penetrate into the skin.

BEFORE TREATMENT

- **Numbing Cream:** A good layer of numbing should be applied to the treatment area 60-90 minutes prior to treatment.
- **Valtrex:** Let us know if you have a history of cold sores. Patients should be on a preventative five-day course of anti-viral medication that starts the day before your treatment to avoid a cold sore break out.
- **Acetaminophen (Tylenol):** We recommend taking Tylenol and ibuprofen 1 hour prior to appointment. This will help with some discomfort of the procedure

AFTER TREATMENT

- **Day 1-2:** Skin will be very dry. Moisturizing and icing are key. An ointment moisturizer is best during the first few days. Ice in 15 minute on, 15 minute off, intervals over the first 24 hours to help with redness and heat. You may notice some red stripping or streaking of skin. This is normal and will fade.
- **Day 3-4:** You may develop some very small pinpoint crusting. Do not scrub at these, they will fall off naturally. At this point you can transition to gentle cream based moisturizer. Powdered foundation can be worn.
- **Day 6-7:** Continue gentle moisturizer and cleanser. Skin should be clearing and nearly finished healing at this point. Avoid exposure to the sun for 1 week. If sun exposure is expected, apply an SPF 30 or higher sunblock to prevent pigmentation changes.
- Avoid any irritants or bleaching agents, such as any products containing Retin-A, retinol, benzoyl peroxide, glycolic & salicylic acids, astringents or Vitamin C for 2 weeks after your treatment.
- If instructed by your provider, or if you develop any crusting, you may treat area with vinegar soaks.
- 1 tablespoon white vinegar + 1 quart water. Mix ingredients together & store in fridge between uses. Soak a soft cotton cloth or gauze in the solution. Wring out cloth and apply to the areas for about 15 minutes. Repeat this twice daily. Do not "double dip" the cloth in the solution, it will be contaminated.

POSSIBLE SIDE EFFECTS

- **Common:** Redness, swelling, bruising, crusting
- **Rare:** Scarring, hyperpigmentation, cold sores, infection

If Instructed Products: Bleaching Cream, retinol or Retin-A
Suggested Products: EltaMD Foaming Facial Cleanser, Vaniply ointment, EltaMD AM Therapy, TIZO3

More Info:



Resources:

